

Ventilago viminalis

Common name:

Supplejack,

Palatability to Livestock:

High at all stages.

Toxicity to Goats:

Low risk.

Toxicity to Other Species:

Potentially toxic to sheep and cattle.

Poisonous Principle:

Hydrolysable tannins.

Effects:

Signs and symptoms;

- . Dark brown urine,
- . Depression, stiff gait,
- . Convulsions.

Health and Production Problems;

- . Long term ill-thrift in animals that develop kidney damage,
- . Sudden death.

Treatment;

See Vet.

Integrated Control Strategy:

Be aware of potential stock problems.

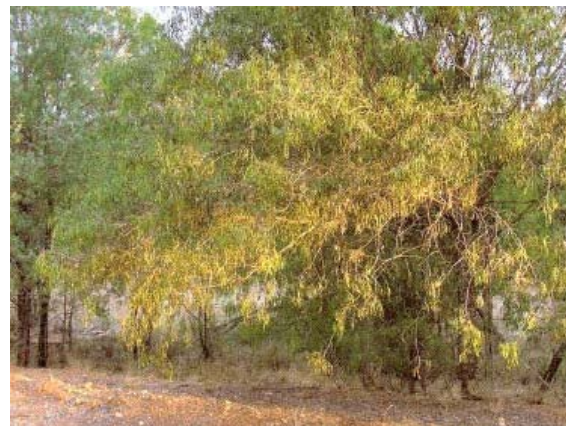
Comments:

- . Starts life as a woody climber, twining around the nearest tree.
- . Becomes thick and woody, developing into a scrawny tree with several intertwining trunks and a crown of sparse drooping foliage.
- . Eventually grows into a shapely spreading tree up to 6 m high, and 9 m across.
- . Dense leafy crown, and many spreading branches that tend to droop.
- . Bark on young stems is pale brown, on mature trunks dark, grey-brown, fissured.

- . Leaves are alternate, dark green and narrow, with a prominent mid-vein, alternate, maybe glossy, blunt tip, distinct midrib.
- . Flowers small, cream, in open bunches in the leaf axils, early spring to summer.
- . Pod is small and round, with a winged tip.
- . Found in inland areas of western NSW, central and west Queensland, to the Kimberley.
- . Regenerates quickly after lopping, drought resistant and suckers readily.
- . No field cases of poisoning reported as yet.
- . Regarded as one of the best native fodder trees.
- . Eaten freely by stock, grazed together with other feed it causes no problems.



Picture: *Ventilago viminalis*



Picture: plantnet.rbgsyd.nsw.gov

Further Reading:

- . Everist. Poisonous Plants of Australia. 1981
- . Simmonds, Holst and Bourke. Palatability and Potential Toxicity of Australian Weeds to Goats. 2000.